

infoNews 2010



**Autosampler Vials & Caps
Storage and Septum Vials
Special Vials, HPLC Filter
& Polypropylene Syringes**

News Brochure 2010



infochroma ag

Sumpfstr. 3, CH-6300 Zug; Fax: 041 748 50 65, Tel: 041 748 50 60
e-mail: info@infochroma.ch, www.infochroma.ch

PP-Pure Vial - Polypropylene Vial for 100 - 700 μ l Sample Volumes

Vial from specially pure Polypropylene, can be used universally for Volumes between 100 μ l and 700 μ l. Available with Snap/Crimp Top or Agilent compatible Screw Top. Snap/Crimp Vials can be closed with Snap Caps as well as class Crimp Caps.



G002-SC-PP17 μ

700 μ l Snap/Crimp Vial,
Polypropylene
for volumes from 100 μ l - 700 μ l
size: 12 x 32 mm

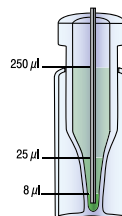


G004-HP-PP17 μ

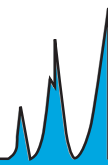
700 μ l Agilent compatible Screw Vial,
Polypropylene,
for volumes from 100 μ l - 700 μ l
size: 12 x 32 mm

iV2 μ -Vial - the ideal solution for smallest volatile samples

- Insert closed with Cap: therefore ideal for volatile samples, when a sample is stored in the fridge over an extended period of time, for microreactions or when the sample has to be shaken
- long slim taper; very low dead volume (< 5 μ l) & suitable for side-hole needles
- established 12 x 32 mm all-in-one Design



Crimp iV2μ clear borosilicate glass 8002-CV-H/iV2 μ amber borosilicate glass 8002-CV-D/iV2 μ	Snap/Crimp iV2μ clear borosilicate glass 8002-SC-H/iV2 μ amber borosilicate glass 8002-SC-D/iV2 μ	Agilent kompatibel iV2μ clear borosilicate glass 8004-HP-H/iV2 μ amber borosilicate glass 8004-HP-D/iV2 μ
--------------------------------------------------------------------------------------------------------------------------------------------	-------------------------------------------------------------------------------------------------------------------------------------------------	---------------------------------------------------------------------------------------------------------------------------------------------------------



Autosampler Vial Caps with Rubber/PTFE or ms-Pure Silicone/PTFE Septum

Aluminium Crimp Cap with Rubber/PTFE Septum

Our standard caps are tested for extractable substances in co-operation with Interlabor Belp (CH). For the easy handling in the laboratory our caps are supplied in clear screw-top PET jars.



clear	G003-AC-Ru/Te
blue	G003-ACB-Ru/Te
green	G003-ACG-Ru/Te
yellow	G003-ACY-Ru/Te

Snap Cap with ms-Pure Silicone/PTFE Septum

The MS-Pure Silicone/PTFE Septum is a septum from natural non-pigmented silicone and natural PTFE that proved 60 % cleaner than „standard“ silicone/PTFE septa from competitors. With the increasing sensitivity of GC's and HPLC's there is an increased need for low bleed septum material to reduce the potential for sample error and to improve overall reliability.



clear	G003-SCC-SKFK10
blue	G003-SCB-SKFK10
red	G003-SCR-SKFK10

Agilent compatible Screw Cap with ms-Pure Silicone/PTFE Septum



blue	G004-HP-CB-SKFK10
black	G004-HP-CS-SKFK10
red	G004-HP-CR-SKFK10
yellow	G004-HP-CY-SKFK10

8 mm Screw Caps with and without flange for Narrow Mouth Screw Vials



Our 8 mm Narrow Mouth Screw Caps are available as standard Cap and Screw Cap with flange for Japanese Autosamplers, where the vial hangs in the rack by the cap.

blue	G004-NM-CB-SKFK10	red	G004-NM-CR-SKFK10
yellow	G004-NM-CY-SKFK10	black	G004-NM-CS-SKFK10
green	G004-NM-CG-SKFK10	white	G004-NM-CW-SKFK10

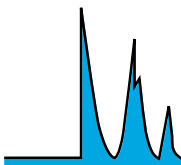
1.1 ml Crimp Vial with small residual volume



G002-CV-H/T11 μ

tapered 1.1 ml Crimp Vial with small residual volume
clear borosilicate glass
size 12 x 32 mm
requires Support Sleeve

*also available with 8 mm screw thread or amber borosilicate glass, inquire.



Wash Vials with Diffusion Cap in six colours

Wash Vials are in fact normal 4 ml Screw Vials which are filled with a solvent. Instead of a septum, the screw cap has a funnel, the diffusion insert. Contrary to other Wash Vials on the market, our Wash Vials have a diffusion insert that snaps into the screw cap staying in place when the vial is opened and filled, so that the diffusion insert cannot get lost. Since the syringe descends to the same depth in both the standard 12 x 32 mm vial and the 15 x 45 mm Wash Vial and a good part of the solvent in the Wash Vial cannot be used, the minimum filling level is marked on the Wash Vial. On the side of the waste solvent this is in reverse. The syringe should not dip into the waste solvent and the maximum filling level is marked.



GWMB4X-GTG-H



- 4 ml Wash Vial Kit
- 4 x 20 Solvent Vial with Screw Caps blue, yellow, green and red
- 2 x 10 Waste Vials with Screw Caps white and black
- Screw Caps and Diffusion Insert assembled

VMax-Vial - the big „Vase“ for Optimized Microsampling

- big Vase Vials up to 60 ml
- no support needed
- can be produced with any volume up to 60 ml
- with crimp or screw-top
- ideal for automated sample preparation
- special sizes on request

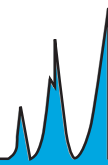


- 3.5 ml Screw VMax-Vial
size: 14 x 45 mm
screw thread 13-425
- G072-14/045-H/VM μ**
clear borosilicate glass
- G072-14/045-D/VM μ**
amber borosilicate glass

13 mm Screw Caps in 6 colours

- G075-C*/15**
closed-top PTFE lined screw cap
- G074*-SKFW16/13**
open-top Screw Cap
with clear silicone/
PTFE Septum










Headspace Screw Vial with magnetic Screw Cap

Headspace Chromatography requires the vial to be tightly sealed and the closure to withstand pressure. This requires some effort, and is tiring when closing larger series. Our newly developed screw-top Headspace Vial only requires a torque < 1 Nm for a pressure tight seal while common solutions require a torque > 8 Nm.



Design Registration No. DE 20 2007 008 595.8; Priority Date 15. June 2007

20 ml Headspace Vial, clear glass, 23 x 75 mm and screw cap with septum

	grey Butyl Rubber/PTFE	up to 150°C	GHS6*-20R-BZFZ31-H
	blue Silicone/grey PTFE	up to 150°C	GHS6*-20R-SBFZ31-H
	clear Silicone/white PTFE	up to 150°C	GHS6*-20R-SKFW32-H
	white Silicone/red PTFE	up to 150°C	GHS6*-20R-SWFR31-H
	white Silicone/red PTFE	up to 120°C	GHS6*-20R-SWFR16-H

* replace * with the cap colour of your choice: B = blue, G = green, R = red, S = black, W = white, Y = yellow

20 mm Crimp Cap with ms-Pure Silicone/PTFE Septum

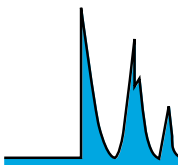
The ms-Pure Silicone/PTFE Septum is from natural non-pigmented Silicone/PTFE. This is 60 % cleaner than other „standard“ Silicone/PTFE Septums on the market. With the increasing sensitivity of GC's and HPLC's there is an increased need for low bleed septum material to reduce the potential for sample error and to improve overall reliability.



G007-MAC*-SKFK30
magnetic blue (* = B) or red (* = R)
Aluminium Crimp Cap with ms-Pure
Silicone/PTFE Septum



8007-ACC-SKFK30
Aluminium Crimp Cap with
ms-Pure Silicone/PTFE Septum



Storage Vials from 1 - 60 ml



With the two additional vial diameters 17 & 23 mm our Storage Vial line is even more comprehensive offering a wide choice of vials with volumes ranging from 1 ml to 60 ml and PTFE lined closed-top screw caps in 6 different colours. For extra convenience our Storage Vials are packed in high quality cardboard boxes with a grit divider for 100 vials.

Storage Vial Kit

With our Storage Vial Kits you always have the right vials in stock. Volumes and cap colours are assorted.



G075X-12Kit02-H

clear borosilicate glass

G075X-12Kit02-D

amber borosilicate glass



with Vials 12 mm \varnothing , up to 2 ml

Quantity	Height	Volume
35 Pcs.	24 mm	1 ml
30 pcs.	32 mm, V-Vial	1.5 ml
35 pcs.	32 mm	2 ml

G075X-14Kit05-H

clear borosilicate glass

G075X-14Kit05-D

amber borosilicate glass



with Vials 14 mm \varnothing , up to 5 ml

Quantity	Height	Volume
35 pcs.	30 mm	2.5 ml
30 pcs.	45 mm	4 ml
35 pcs.	50 mm	5 ml

G075X-17Kit10-H

clear borosilicate glass

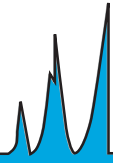
G075X-17Kit10-D

amber borosilicate glass



with Vials 17 mm \varnothing , up to 10 ml

Quantity	Height	Volume
20 pcs.	27 mm	2.5 ml
20 pcs.	35 mm	3.75 ml
20 pcs.	42 mm	5 ml
20 pcs.	60 mm	7.5 ml
20 pcs.	72 mm	10 ml



G075X-19Kit15-H
clear borosilicate glass

G075X-19Kit15-D
amber borosilicate glass



with Vials 19 mm ø, up to 15 ml

Quantity	Height	Volume
25 pcs.	37 mm	5 ml
25 pcs.	50 mm	7.5 ml
25 pcs.	65 mm	10 ml
25 pcs.	85 mm	15 ml

G075X-23Kit25-H
clear borosilicate glass

G075X-23Kit25-D
amber borosilicate glass



with Vials 23 mm ø, 7.5 - 25 ml

Quantity	Height	Volume
20 pcs.	37 mm	7.5 ml
20 pcs.	45 mm	10 ml
20 pcs.	60 mm	15 ml
20 pcs.	75 mm	20 ml
20 pcs.	85 mm	25 ml

G075X-27Kit25-H
clear borosilicate glass

G075X-27Kit25-D
amber borosilicate glass



with Vials 27 mm ø, up to 25 ml

Quantity	Height	Volume
25 pcs.	37 mm	10 ml
25 pcs.	47 mm	15 ml
25 pcs.	57 mm	20 ml
25 pcs.	68 mm	25 ml

G075X-27Kit60-H
clear borosilicate glass

G075X-27Kit60-D
amber borosilicate glass



with Vials 27 mm ø, up to 60 ml

Quantity	Height	Volume
25 pcs.	78 mm	30 ml
25 pcs.	95 mm	40 ml
25 pcs.	118 mm	50 ml
25 pcs.	140 mm	60 ml

Septum Vials from 1 - 60 ml



Our Storage Vials with diameters 12, 14, 19 & 27 mm and Volumes from 1 - 60 ml are also available as Septum Vials with open-top Screw Cap and Silicone/ PTFE Septum. Like our Storage Vials, they are packed per 100 pcs in high quality cardboard boxes with a grit divider for extra convenience.

Septum Vial Kit

With our Septum Vial Kits you always have the right vial size in stock. Vial volumes and cap colours are assorted.



with 1 mm thick white Silicone/red PTFE Septum

G074X-12Kit02-SWFR10-H

clear borosilicate glass

G074X-12Kit02-SWFR10-D

amber borosilicate glass



with Vials 12 mm ø, up to 2 ml

Quantity	Height	Volume
35 pcs.	24 mm	1 ml
30 pcs.	32 mm, V-Vial	1.5 ml
35 pcs.	32 mm	2 ml

with 1.6 mm thick clear Silicone/red PTFE Septum

G074X-14Kit05-SKFW16-H

clear borosilicate glass

G074X-14Kit05-SKFW16-D

clear borosilicate glass



with Vials 14 mm ø, up to 5 ml

Quantity	Height	Volume
35 pcs.	30 mm	2.5 ml
30 pcs.	45 mm	4 ml
35 pcs.	50 mm	5 ml

with 1.6 mm thick clear Silicone/red PTFE Septum

G074X-17Kit10-SKFW16-H

clear borosilicate glass

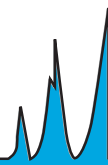
G074X-17Kit10-SKFW16-D

amber borosilicate glass



with Vials 17 mm ø, up to 10 ml

Quantity	Height	Volume
20 pcs.	27 mm	2.5 ml
20 pcs.	35 mm	3.75 ml
20 pcs.	42 mm	5 ml
20 pcs.	60 mm	7.5 ml
20 pcs.	72 mm	10 ml



with 1.6 mm thick clear Silicone/red PTFE Septum

G074X-19Kit15-SKFW16-H

clear borosilicate glass

G074X-19Kit15-SKFW16-D

amber borosilicate glass



with Vials 19 mm \varnothing , up to 15 ml

Quantity	Height	Volume
25 pcs.	37 mm	5 ml
25 pcs.	50 mm	7.5 ml
25 pcs.	65 mm	10 ml
25 pcs.	85 mm	15 ml

with 3.4 mm thick clear Silicone/red PTFE Septum

G075X-27Kit25-SKFW34-H

clear borosilicate glass

G075X-27Kit25-SKFW34-D

amber borosilicate glass



with Vials 27 mm \varnothing , up to 25 ml

Quantity	Height	Volume
25 pcs.	37 mm	10 ml
25 pcs.	47 mm	15 ml
25 pcs.	57 mm	20 ml
25 pcs.	68 mm	25 ml

with 3.4 mm thick clear Silicone/red PTFE Septum

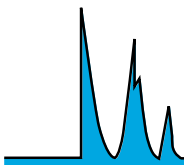
G075X-27Kit60-SKFW34-H
clear borosilicate glass

G075X-27Kit60-SKFW34-D
amber borosilicate glass



with Vials 27 mm \varnothing , up to 60 ml

Quantity	Height	Volume
25 pcs.	78 mm	30 ml
25 pcs.	95 mm	40 ml
25 pcs.	118 mm	50 ml
25 pcs.	140 mm	60 ml






Yeti HPLC Syringe Filter with 13, 25 & 33 mm Diameter



Luer-Lock
eliminates filter blow-off







Membrane & Porosity imprinted
on filter housing for certain identification

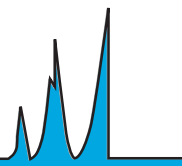
Sealing Ring
prevents housing burst

Sample Volume	up to 10 ml	up to 100 ml	up to 100 ml
			
Filter ø	13 mm Filter	25 mm Filter	33 mm Filter

Polypropylene Syringes with Luer Slip



	Volume 1 ml with Luer Slip G899-PP01		Volume 10 ml with Luer Slip G899-PP10
	Volume 3 ml with Luer Slip G899-PP03		Volume 20 ml with Luer Slip G899-PP20
	Volume 5 ml with Luer Slip G899-PP05		Volume 50 ml with Luer Slip G899-PP50



Pre-cleaned Vials for TOC and other critical applications



We offer surface treatment for vials. Thus we can add an opaque coating or customise, siliconise, silanise, wash, sterilise and pyrogenise vials.

Send us an inquiry: anfrage@infochroma.ch

10 & 20 ml Storage Vials for the long term storage of volatile samples

Our 10 & 20 ml Headspace Vials from Page 5 are now also available with closed-top screw cap from melamine resin. They are especially suited for the long term storage of volatile samples. The screw caps are as always available in 6 colours, either PTFE lined or with butyl rubber/PTFE septum.



GH85*-23/043-H

10 ml Headspace Screw Vial, clear glass, rounded bottom, 22.5 x 42.5 mm, assembled with especially tight hexagonal PTFE lined closed-top screw cap.

GH85*-23/073-H

20 ml Headspace Screw Vial, clear glass, rounded bottom, 22.5 x 72.5 mm, assembled with especially tight hexagonal PTFE lined closed-top screw cap.

GH85*-23/043-BZFZ31-H

10 ml Headspace Screw Vial, clear glass, rounded bottom, 22.5 x 42.5 mm, assembled with especially tight hexagonal closed-top screw cap with butyl rubber/PTFE septum.

GH85*-23/073-BZFZ31-H

20 ml Headspace Screw Vial, clear glass, rounded bottom, 22.5 x 72.5 mm, assembled with especially tight hexagonal closed-top screw cap with butyl rubber/PTFE septum.

* cap colours:

B = blue
Y = yellow
G = green
R = red
S = black
W = white

HALO Column - fast Separation at „normal“ pressure

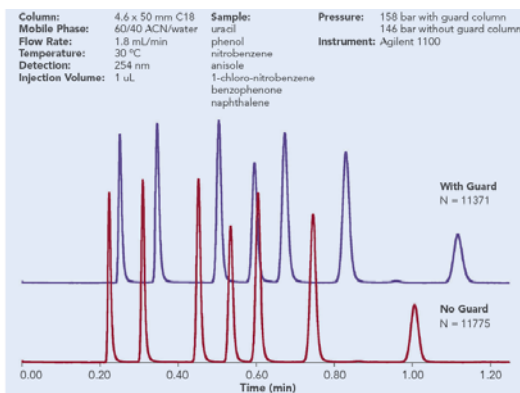


The HALO column allows as fast a separation as in UHPLC, yet at „normal“ pressure below 400 bar and with common HPLC Units. This is made possible by using Fused Core Technology where a layer of porous 0.5 μm particles is fused to a solid 1.7 μm silica core. The shorter diffusion path of HALO particles reduces axial dispersion of solutes and minimizes peak broadening.

The HALO column generates more separation power and can either be used for faster analysis or more separation power. Customer tests, however, have shown that applications having used 5 μm material require some flow adjustments or else back pressure rises considerably. For more information consult the Conversion Brochure on our webpage: www.infochroma.ch/hplc.

HALO Guard Columns

HALO UHPLC Guard Column provide both physical (filtration) and chemical protection without compromising the ultra high performance of the UHPLC column. The guard cartridges are easily replaced without having to remove the guard column holder from the flow path.



8AM-92814-602

Halo Column C18, 4.6 x 100 mm

8AM-92814-608

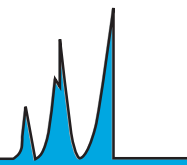
Halo Column C8, 4.6 x 100 mm

8AM-92814-102

Halo Fused-Core Guard Column C18, 4.6 x 5 mm

8AM-92814-108

Halo Fused-Core Guard Column C8, 4.6 x 5 mm



HALO HILIC

for the fast separation of polar compounds

8AM-92811-601

Halo Column Hilic
2.1 x 100 mm

8AM-92812-101

Halo® Fused-Core® Guard
Column* Hilic 2.1 x 5 mm



HALO RP-AMIDE

Alternative for C18 Phases for Analytes that prove difficult to be separated on a C18 Phase

8AM-92814-407

Halo Column RP-Amide
4.6 x 50 mm

8AM-92814-107

Halo® Fused-Core® Guard
Column* RP-Amide 4.6 x 5 mm



HALO PHENYL-HEXYL

for the fast separation of aromatic compounds

8AM-92814-406

Halo Column Phenyl Hexyl,
4.6 x 50 mm

8AM-92814-106

Halo® Fused-Core® Guard
Column* Phenyl-Hexyl,
4.6 x 5 mm



HALO PEPTIDE ES-C18

for the separation of Peptides
high efficiency, robust long lasting column, high peak capacity

8AM-92124-702

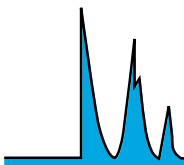
Halo Column Peptide ES-C18
4.6 x 150 mm

8AM-92814-102

Halo® Fused-Core® Guard
Column* Peptide ES-C18,
4.6 x 5 mm

 for detailed information see: www.infochroma.ch/hplc

* Pack of 3 pcs.
* requires Guard Column Holder 8AM-94900-001



Ruedi Schwarz
Industriestrasse 36
Postfach 1623
CH-4601 Olten

Telefon: +41 (0)62 293 13 60
Fax: +41 (0)86 079 647 85 84
info@sertec.ch
www.sertec.ch



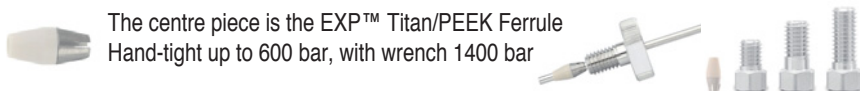
- Heraeus Noblelight** all about light
- Epson** the visualization of your work
- Optimize Technologies** the perfectionist for your HPLC system
- Sykam** HPLC / Ion Chromatography
- Tauto Biotech** HSCCC, High Speed Counter Current Chromatography

your Partner for individual servicing and validation of your Agilent HPLC System, even if they are out of support by Agilent Technologies.

from Optimize Technologies

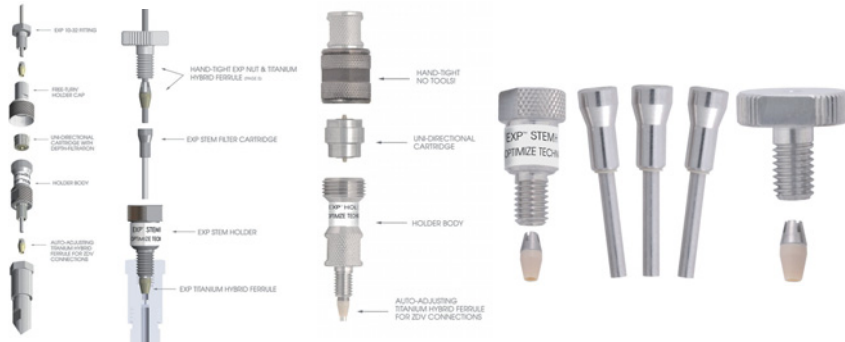
EXP™ - the answer and solution for UHPLC

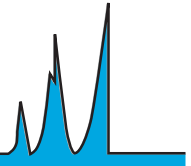
From the simply secure and reusable capillary connection to filtration, pre- or trap columns. The hand-tight change over of Filter Elements, Guard and Trap Columns, tight up to 1400 bar.



The centre piece is the EXP™ Titan/PEEK Ferrule
Hand-tight up to 600 bar, with wrench 1400 bar

Filtration Microfiltration (0.27µl) Trap / Guard StemTrap Kit (0.17, 0.33, 0.68, 1.5, 2.6µl)





from Tauto Biotech

HSCCC is based on a hydrodynamic separation system without a fixed stationary solid phase body. Advantage: Practically 100% recovery rate, no irreversible adsorption of the sample and the need to replace expensive columns, as both phases are liquid, the sample mix can be regained at any time. Minimal risk of denaturation, simple Scale-UP

Separation or concentration of:

- contaminants for analytical analysis
- APIs from natural herbs
- Radioactive Isotopes
- Polypeptides and Proteines
- Synthetic compounds
- etc.

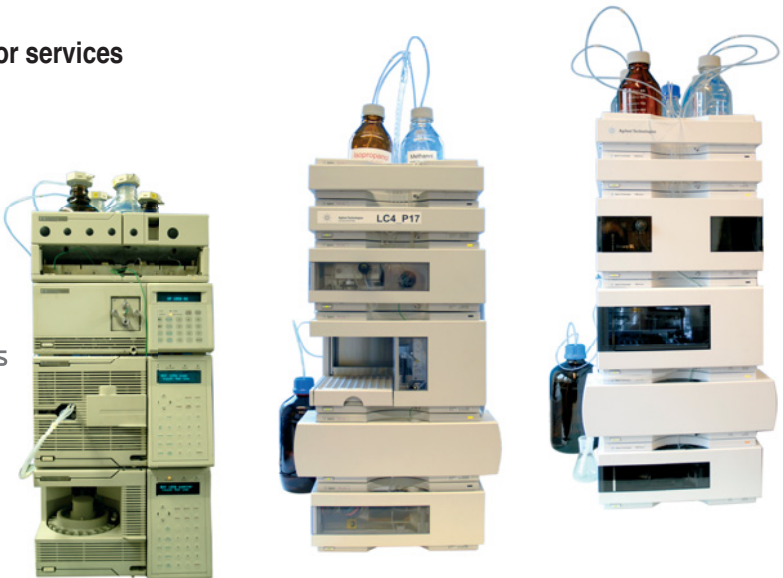


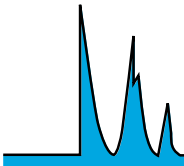
your partner for services

Qualification

Repairs

Servicing





Ihr kompetenter Ansprechpartner für

Chromatography

Bioseparation

**Isolation
&
Purification**

HILIC

Trennung hochpolarer Proben
Für die spezielle Methode der HILIC zur Trennung hochpolarer Substanzen steht das ZIC-HILIC Material in Form verschiedenster gepackter Säulen, Bulk-Material und SPE-Kartuschen zur Verfügung.



UHPLC

UHPLC Phasen und Zubehör
dichrom bietet für diese Technik eine ganze Reihe an Sub-2-µm Materialien in passender UHPLC-Hardware an. Das spezielle Zubehör für die hohen Druckbereiche der UHPLC kann ohne Werkzeug fingertight montiert werden.



Accessories

HPLC Zubehör und SPE
Passend für alle gängigen HPLC-Systeme liefert dichrom in umfassender Auswahl das nötige Zubehör. Außerdem sind SPE-Kartuschen zur Probenvorbereitung mit unterschiedlichen Selektivitäten und in verschiedenen Größen erhältlich.



Proteomics

Innovative Produkte für die Biologische Massenspektrometrie
Das Angebot umfasst z.B. Gele, Säure-labile Detergenzien, Standards, Tips und monolithische Säulen zur Probenvorbereitung für die Protein-Identifizierung u. Charakterisierung mittels MS. Zusätzlich erleichtern Kartuschen-Systeme und Trap-Säulen die Probenvorbereitung. Das innovative GPR-800 System (gel protein recovery system) beinhaltet eine elegante Methode zur Rückgewinnung intakter Proteine aus Gelen unter Verwendung eines speziellen mikrofluidischen Kunststoffchips. Zusätzlich bietet dichrom eine Reihe ultrareiner MALDI Matrices wie z.B. CHCA an.



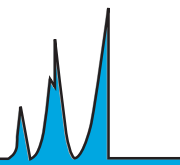
Genomics

CPC

Centrifugal Partition Chromatography
Diese Flüssig-Flüssig Chromatografie kann auf einen weiten Bereich von Substanzen, von Carotenoiden bis zu Peptiden/Proteinen, aus quasi jeder Matrix angewendet werden. Dabei lassen sich wenige Milligramm bis hin zu Kilogramm Mengen sauber trennen.



Und viele weitere interessante Lösungen...



Florian ZiLLger from chemoLine® is happy about the invitation to join the Swiss company infochroma ag at ilmac.

Europe's first chemistry fanshop is present at the ILMAC 2010 in Basle (21-24 September 2010) at the booth of infochroma ag (Hall 1.1 Booth: A58).

„I like Chemistry“ and „GHS REACH SHIRT“ are the brand new Chemist T-Shirts of the young entrepreneur from Rheinland.

Products from chemoLine® are special presents for chemistry fans. chemoLine® is Europe's first Chemistry – Merchandising - Shop. Chemists, physicist and natural scientists are Florian ZiLLgers' customers.

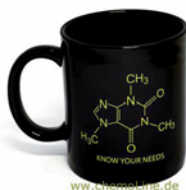


From infochroma ag products, chemoLine® created the Laboratory-Necklace „Molecular Chain“. Glass vials with an 8mm crimp neck, crimped with an 8 mm aluminium crimp cap including rubber/PTFE Septum and filled with colourful sugar pearls, are the eye-catcher of the extravagant necklace.



500 ml coffee holds the „Laboratory Cup“. Decorated with the chemical structure of the molecule 1,3,7-Trimethyl-xanthin

(Coffein) and the slogan „KNOW YOUR NEEDS“, this stylish coffee mug is the sensation in every laboratory.

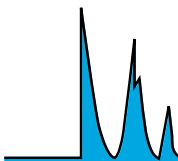


The laboratory ties „Laboratory Glass & Microscope“, „Periodic System“ or „Einstein“ also have a high Nerd - Factor.

Also get to know the promotional gifts from chemoLine®.

They are great instruments for customer binding and winning new customers. Discover these treasures yourselves under: www.chemoLine.de. Or even better, visit us at infochroma ag and chemoLine® in Hall 1.1 at booth: A58. We are looking forward to seeing you.





Applica 2011

Seminar with Exhibition, Workshops and Posters, organised by DAC/SCG, SLV, SVC and infoMac

The next APPLICA takes place on 6./7. September 2011 again in Olten. The topic is „**Chemical Analysis at the Limit of Pressure, Flow and Temperature**“. The first day concentrates Molecules of less than MG 1000 and the second for Molecules over MG 1000. It's a subject of high interest for exhibitors and participants.

infoExpo 2011 Seminar, Workshop & Exhibition on the latest developments in Chromatography



Lausanne
Tuesday
08.11.2011



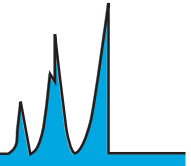
Zürich
Thursday
10.11.2011



www.infoexpo.ch



infoNews 2010



on the infochroma booth you will meet



Christian Baumli



Nicole Fontana



Sergej Aleschko



Harald Dibowski
Dichrom GmbH



Ruedi Schwarz - sertec electronics
Amanda Ford - Optimize Technologies Inc



Florian Zillger
ChemoLine®



at the infoBar

experience a revival of summer 2010 with a taste of the Thai delicacies from the Basle Restaurant Thai-Family Sudsa Ard

What have Garden Gnomes and Vials in common?

We often hear this question, the answer is simple:
Both are from Gräfenroda.

Gräfenroda is considered the birthplace of the Garden Gnomes, where, since 1874, the Philipp Griebel Garden Gnome Manufactory produces the familiar Garden Gnome from terra cotta. The manufactory survived 2 World Wars and the nationalisation in GDR times to VEB Terrakotta; today it is run in 4. generation by the great grandson of the founder. The garden gnomes are hand crafted by Reinhard Griebel and lovingly painted by hand by his team. Thus each gnome is unique and an evidence of the Thuringia craftsmanship.

Gnomes are considered to represent the miners and symbolise diligence, honesty, hard work and modesty by their shortness. The gnome lives in dualism of reality and virtuality and perceptive people call him patron of home and yard. That's why the gnome, perceived as virtual personality, is given a name.

Glastechnik Gräfenroda GmbH was founded after the „Wende“ (reunification) and produces laboratory vials for Chromatography and chemical analysis. It is a small, traditional, family owned producer, attached to its home county Thuringia. infochroma ag and Glastechnik Gräfenroda GmbH look back on a co-operation of many years and we both want more than just produce and offer products in our field: we are consistently questioning and optimising every step from the development to the final control of a product, in order to supply you with useful vials as a solution for your daily chemical analysis. Our focus is to achieve a consistently high quality and to maintain it. With deliberate lateral thinking we are looking for solutions, to develop products for new applications.

With the garden gnome, we have found a symbol for our efforts. Rosa Maria our Laboratory Lady Gnome shall present you with a piece of our Thuringia home and its craftsmanship and be the patron saint of your laboratory. With her virtual personality, she will, with diligence and honesty, watch over the correctness and accuracy of your analysis and protect your laboratory from wrong. For as the Book of books condescends to say: Faith moves mountains.



infochroma ag

Sumpfstr. 3, CH-6300 Zug; Fax: 041 748 50 65, Tel: 041 748 50 60
e-mail: info@infochroma.ch, www.infochroma.ch