

# infochroma ag

Sumpfstr. 3, CH-6300 Zug; Fax: 041 748 50 65, Tel: 041 748 50 60  
e-mail: [info@infochroma.ch](mailto:info@infochroma.ch), [www.infochroma.ch](http://www.infochroma.ch)

We know the Mepps Spinner is for catching predatory fish. However, we don't want to lie in wait for fish today, then as we learn from the news, our seas are already overfished. Instead we want to introduce a fully automatic means of sample preparation for the fishing of substances.

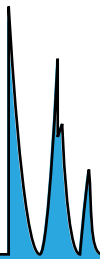
The MEPS System from SGE is a miniaturized version of SPE where the SPE cartridge is incorporated into the needle of a microlitre syringe. If used in a programmable sampler like the CTC for example, sample preparation can be fully automated and the extract can be directly injected into the chromatographic system without any further concentration of the sample.

The packing material in the needle has been used 50 times without any substantial carryover and therefore is very cost effective. So it's like fishing, you can catch more than one pike with the same lure. If you want to learn more about MEPS, read the attached PDF or visit our website or contact us.

MEPS is available for both LC and GC applications.

As we constantly extend our programme, we want to reduce our stock of Agilent columns in favour of SGE columns and therefore offer Agilent columns at a stock reduction price available as long as stock lasts. Find more information on available columns and prices on the attached list.





# infochroma ag

Sumpfstr. 3, CH-6300 Zug; Fax: 041 748 50 65, Tel: 041 748 50 60  
e-mail: info@infochroma.ch, www.infochroma.ch

## Extraction to Injection in a single process - MEPS (Micro Extraction by Packed Sorbent)



### MEPS is a miniaturized version of SPE

- MEPS Sample volumes may be as little as 10  $\mu$ l so it reduces the volumes needed
- MEPS can be used on-line using a single device thus reducing sample processing times and the need for an operator intervention
- MEPS is available for both LC and GC
- MEPS is suitable for Reversed Phase, Normal Phase, Mixed Mode or Ion Exchange
- current SPE phases are available

MEPS consists of two pieces, the MEPS syringe and the MEPS Barrel Insert and Needle Assembly (BIN). The BIN contains the stationary phase and is built into the needle. The gas tight 100  $\mu$ l oder 250  $\mu$ l Syringes allow handling under normal SPE conditions. The BIN can easily be changed.

### Kits consisting of Syringe & Method Development Kit

#### For GC Applications:

MEPS Method Development Kit for Thermo Scientific and CTC Analytics Systems consisting of Barrel Insert and Needle Assembly with cone tip needle with 0.63mm OD, Gauge 23 containing 1 each of C18, C8, C2, SILICA and C8+SCX

**8S100R-MEPS-GCKit CHF 580.00/Kit**  
with 100  $\mu$ l MEPS Syringe and Method Development Kit as described above for Thermo Scientific and CTC Analytics Systems

**8S250R-MEPS-TS-GCKit CHF 580.00/Kit**  
with 250  $\mu$ l MEPS Syringe and Method Development Kit as described above for Thermo Scientific

**8S250R-MEPS-CTC-GCKit CHF 580.00/Kit**  
with 250  $\mu$ l MEPS Syringe and Method Development Kit as described above for CTC Analytics Systems

#### Für LC Applications:

MEPS Method Development Kit for Thermo Scientific and CTC Analytics Systems consisting of Barrel Insert and Needle Assembly with cone tip needle with 0.72mm OD, Gauge 22 containing 1 each of C18, C8, C2, SILICA and C8+SCX

**8S100R-MEPS-LCKit CHF 580.00/Kit**  
with 100  $\mu$ l MEPS Syringe and Method Development Kit as described above for Thermo Scientific and CTC Analytics Systems

**8S250R-MEPS-TS-LCKit CHF 580.00/Kit**  
with 250  $\mu$ l MEPS Syringe and Method Development Kit as described above for Thermo Scientific

**8S250R-MEPS-CTC-LCKit CHF 580.00/Kit**  
with 250  $\mu$ l MEPS Syringe and Method Development Kit as described above for CTC Analytics Systems

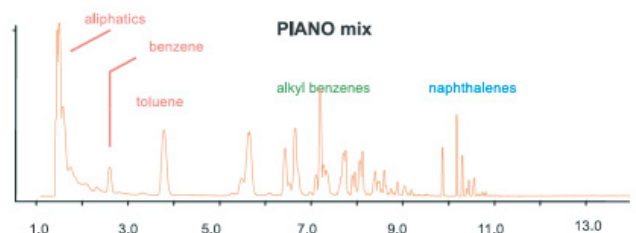
### BPX90 GC Säule 90 % Cyanopropyl Polysilphenylen Siloxan Temperature Limit 280°C, good stability



separates compounds according to their polarity, which means double or triple bonded compounds experience a  $\pi$ - $\pi$  interaction and experience a stronger retention.

eg. BPX90 Capillary Column  
Length 30 m, ID 0.25 mm, Film 0.25  $\mu$ m  
Temp. Limite 280°C

**8SBPX90-30/025/025 CHF 930.00 /30 m**



↑ C10    ↑ C11    ↑ C12    ↑ C13    ↑ C14 C15

ELUTION OF HIGHER ALKANES

all prices net, excl. VAT, excl. Postage and Packaging CHF 12.00



Sumpfstr. 3, CH-6300 Zug; Fax: 041 748 50 65, Tel: 041 748 50 60  
e-mail: info@infochroma.ch, www.infochroma.ch

## GC Columns: Stock Reduction

**Quote AT/GC07 when you place your order.**

*all prices net, no further discounts applicable, excl. VAT, excl. Postage and Packaging (CHF 12.00)  
Offer valid as long as supply lasts*

Some columns are in „old“ original packaging; Packaging Code (PC) see column on the right in the table below.

Phase	Length x ID, Film $\mu\text{m}$		Product No.	special offer	list price	PC
DB-5	60 m x 0.25 mm, 1.00 $\mu\text{m}$		122-5063	1100.00	1'253.00	4
DB-1701	15 m x 0.53 mm, 1.00 $\mu\text{m}$		125-0712	427.00	486.00	4
DB-1701	30 m x 0.53 mm, 1.00 $\mu\text{m}$		125-0732	777.00	883.00	3
DB-1301	15 m x 0.53 mm, 1.00 $\mu\text{m}$		125-1312	427.00	486.00	3
HP-1	12 m x 0.20 mm, 0.33 $\mu\text{m}$		19091-60312	349.00	397.00	2
HP-1	15 m x 0.32 mm, 1.00 $\mu\text{m}$	5" Basket	19091Z-211E	601.00	684.00	1
HP-1	30 m x 0.25 mm, 0.25 $\mu\text{m}$	5" Basket	19091Z-433E	628.00	714.00	1
HP-1	30 m x 0.32 mm, 1.00 $\mu\text{m}$		19091Z-213	679.00	772.00	3/4
HP-1	50 m, 0.20 mm, 0.33 $\mu\text{m}$	5" Basket	19091Z-105E	880.00	1'001.00	4
HP-1701	30 m x 0.32 mm, 0.25 $\mu\text{m}$		19091U-413	657.00	747.00	1
HP-1 HT	5 m x 0.53 mm, 0.09 $\mu\text{m}$		19095S-205	651.00	740.00	2/4
HP-23	30 m x 0.25 mm, 0.25 $\mu\text{m}$		19091H-133	600.00	682.00	1
HP-23	60 m x 0.25 mm, 0.25 $\mu\text{m}$		19091H-136	1146.00	1'303.00	1
HP-35	30 m x 0.53 mm, 1.00 $\mu\text{m}$		19095G-123	705.00	802.00	1
HP-35	50 m x 0.20 mm, 0.33 $\mu\text{m}$		19091G-105	704.00	800.00	1
HP-35	60 m x 0.32 mm, 0.25 $\mu\text{m}$		19091G-116	1022.00	1'162.00	1
HP-5	10 m x 0.10 mm, 0.17 $\mu\text{m}$		19091S-002	391.00	445.00	1
HP-5	10 m x 0.10 mm, 0.40 $\mu\text{m}$		19091J-441	398.00	453.00	1
HP-5	25 m x 0.20 mm, 0.50 $\mu\text{m}$		19091J-202	561.00	638.00	4
HP-5	25 m x 0.32 mm, 1.05 $\mu\text{m}$		19091J-212	601.00	684.00	1
HP-5	25 m x 0.32 mm, 0.52 $\mu\text{m}$		19091J-112	601.00	684.00	1
HP-5	30 m x 0.25 mm, 0.25 $\mu\text{m}$		19091J-433	628.00	714.00	4
HP-5	30 m x 0.53 mm, 2.65 $\mu\text{m}$		19095J-123	753.00	856.00	2
HP-5	50 m x 0.32 mm, 0.52 $\mu\text{m}$		19091J-115	1077.00	1'224.00	2
HP-5MS	15 m x 0.25 mm, 0.25 $\mu\text{m}$		19091S-431	440.00	501.00	4
HP-FFAP	15 m x 0.53 mm, 1.00 $\mu\text{m}$		19095F-120	445.00	506.00	1
HP-FFAP	25 m x 0.32 mm, 0.50 $\mu\text{m}$		19091F-112	613.00	697.00	1
HP-FFAP	30 m x 0.25 mm, 0.25 $\mu\text{m}$	5" Basket	19091F-433E	640.00	728.00	4
HP-INNOWax	25 m x 0.20 mm, 0.20 $\mu\text{m}$		19091N-102	561.00	638.00	3
HP-Innowax	30 m x 0.53 mm, 1.00 $\mu\text{m}$	5" Basket	19095N-123E	770.00	875.00	2
HP-Wax	15 m x 0.32 mm, 0.15 $\mu\text{m}$		19091X-011	380.00	432.00	2
HP-Wax	30 m x 0.32 mm, 0.50 $\mu\text{m}$		19091X-213	636.00	723.00	2
ULTRA-1	50 m x 0.20 mm, 0.33 $\mu\text{m}$		19091A-105	1254.00	1'426.00	4
ULTRA-2	25 m x 0.20 mm, 0.33 $\mu\text{m}$		19091B-102	828.00	941.00	4



Packaging Code = 1



Packaging Code = 2



Packaging Code = 3



Packaging Code = 4